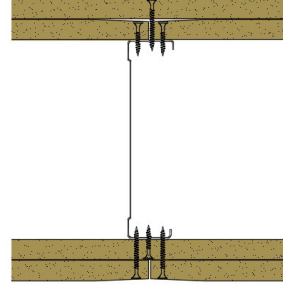


## 146-K-58 - SPEEDLINE System Data Sheet - Version V1 (24-10-23)

SPEEDLINE 146mm 'C' Stud Partition @600mm Ctrs, with 2x Knauf 15mm Wallboard each side



### System Performance Breakdown

Fire Resistance:

BS476 Part 22:1987:

Test Ref & Date or Applied Ref & Report:

Max Height:

Thickness:

Duty Grade: BS 5234: Part 2:1992:

Sound Insulation:

**60/60 Minutes** (Integrity/Insulation).

**BRE 208596 - BRE Report P102396-1011B**

**Refer to Speedline Specification Clause**

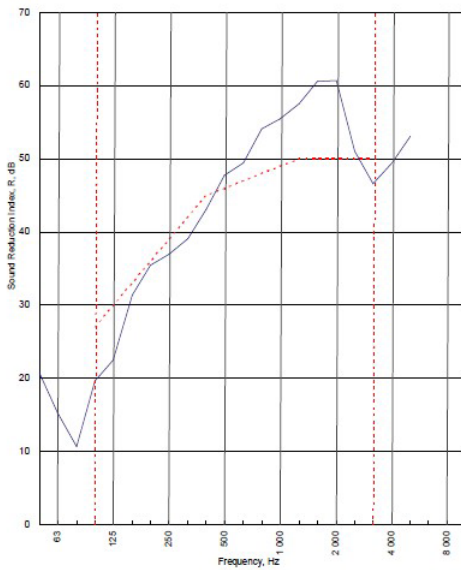
**208 mm.** (At Base Track, Excluding Finishes)

**Severe - Annexes A-F**

**46  $R_w$ dB**, Date Tested or Assessed Against - 70-K-57

Test Code:  
**H17517AA**  
Test Date:  
08/08/2011

| Freq. Hz | R dB |
|----------|------|
| 50       | 20.8 |
| 63       | 15.3 |
| 80       | 10.7 |
| 100      | 19.6 |
| 125      | 22.5 |
| 160      | 31.4 |
| 200      | 35.4 |
| 250      | 36.9 |
| 315      | 39.1 |
| 400      | 43.1 |
| 500      | 47.7 |
| 630      | 49.4 |
| 800      | 54.1 |
| 1000     | 55.5 |
| 1250     | 57.5 |
| 1600     | 60.6 |
| 2000     | 60.7 |
| 2500     | 51.0 |
| 3150     | 46.6 |
| 4000     | 49.4 |
| 5000     | 53.1 |
| 6300     |      |
| 8000     |      |
| 10000    |      |



----- Curve of reference values (ISO 717-1)

|   |   |                          |                          |
|---|---|--------------------------|--------------------------|
| Rating according to BS EN ISO 717-1:1997  | <b><math>R_w</math> (C;Ctr) = 46 (-3;-9) dB</b> |                          |                          |
| Evaluation based on laboratory measurement results obtained by an engineering method: | $C_{50-150} = -6$ dB                            | $C_{50-500} = -5$ dB     | $C_{100-500} = -2$ dB    |
|   | $C_{3,50-3150} = -16$ dB                        | $C_{3,50-5000} = -16$ dB | $C_{3,100-5000} = -9$ dB |

TESTED AT ONE OF THE UKAS ACCREDITED LABORATORIES BELOW

- B.T.C (H-Ref on Graph)
- B.R.E
- AIRO
- S.R.L



Customer: Metsec plc Hepsec Division

BTC 17517A: Page 8 of 10